

































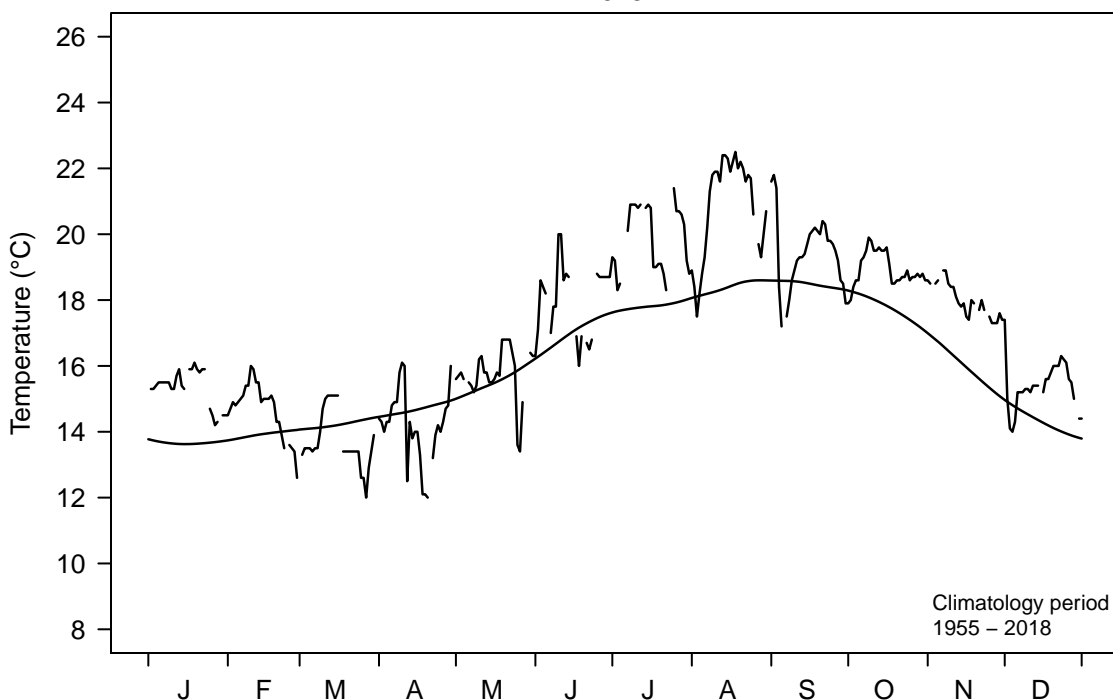






# Santa Barbara, CA

2018



Climatological

2018

	Mean	Max	Min	Mean	Max	Min
Jan	13.6	17.8	10.0	15.4	16.1	14.2
Feb	13.9	17.2	10.0	14.7	16.0	12.6
Mar	14.1	18.2	10.2	13.7	15.1	12.0
Apr	14.6	18.8	10.5	14.2	16.1	12.0
May	15.5	19.4	11.1	15.7	16.8	13.4
Jun	17.0	21.6	13.2	18.0	20.0	16.0
Jul	17.8	22.2	12.7	19.9	21.4	18.3
Aug	18.4	23.4	14.3	20.9	22.5	17.5
Sep	18.5	23.2	13.6	19.5	21.8	17.2
Oct	17.8	23.2	13.9	18.9	19.9	17.9
Nov	16.0	21.0	11.5	18.0	18.9	17.3
Dec	14.3	18.5	10.1	15.4	17.4	14.0

Annual Mean  
17.0

Annual Max  
22.5

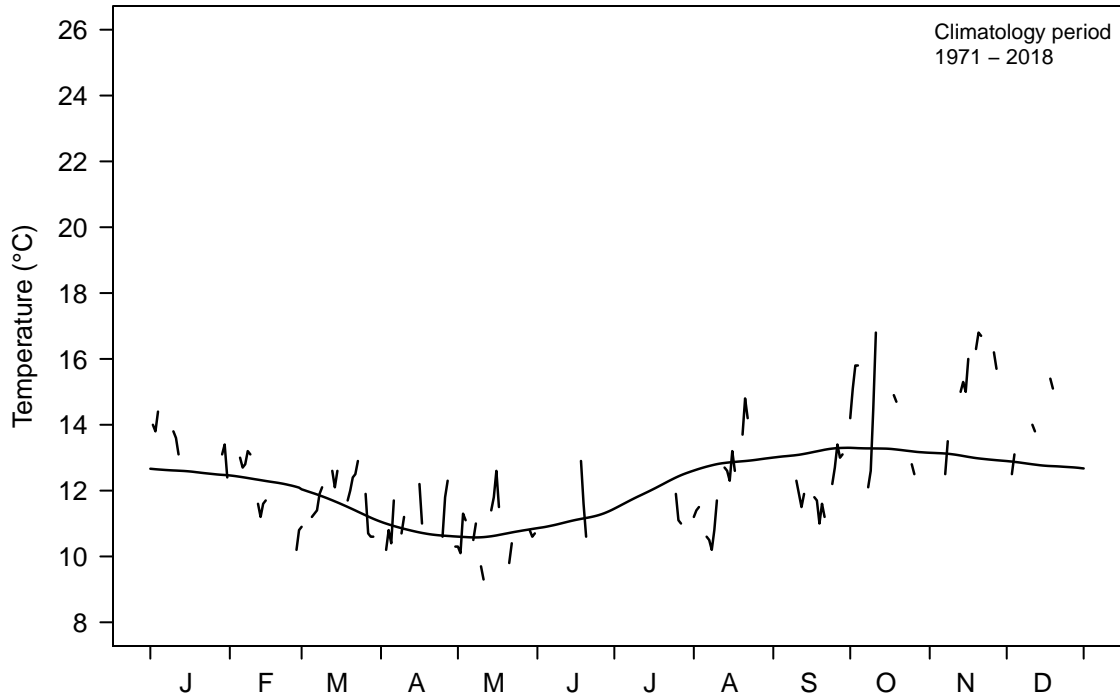
Annual Min  
12.0

Days Sampled  
335/365 (91.8%)

Days Flagged  
2/365 (0.5%)

# Granite Canyon, CA

2018



Climatological

2018

	Mean	Max	Min	Mean	Max	Min
Jan	12.6	15.5	9.4	13.4	14.4	12.4
Feb	12.3	15.2	8.4	11.8	13.2	10.2
Mar	11.5	15.5	8.0	11.7	12.9	10.6
Apr	10.6	14.2	8.0	11.0	12.3	9.9
May	10.6	15.5	8.1	10.8	12.6	9.3
Jun	11.0	15.5	8.4	11.3	12.9	10.3
Jul	12.0	17.9	9.0	12.0	15.0	11.0
Aug	12.8	17.1	10.0	12.5	16.1	10.2
Sep	13.1	18.1	10.3	12.1	13.4	11.0
Oct	13.2	18.7	9.5	14.2	16.8	11.4
Nov	13.0	17.5	9.3	15.1	16.8	12.5
Dec	12.7	16.5	9.2	14.4	15.4	12.5

Annual Mean  
12.5

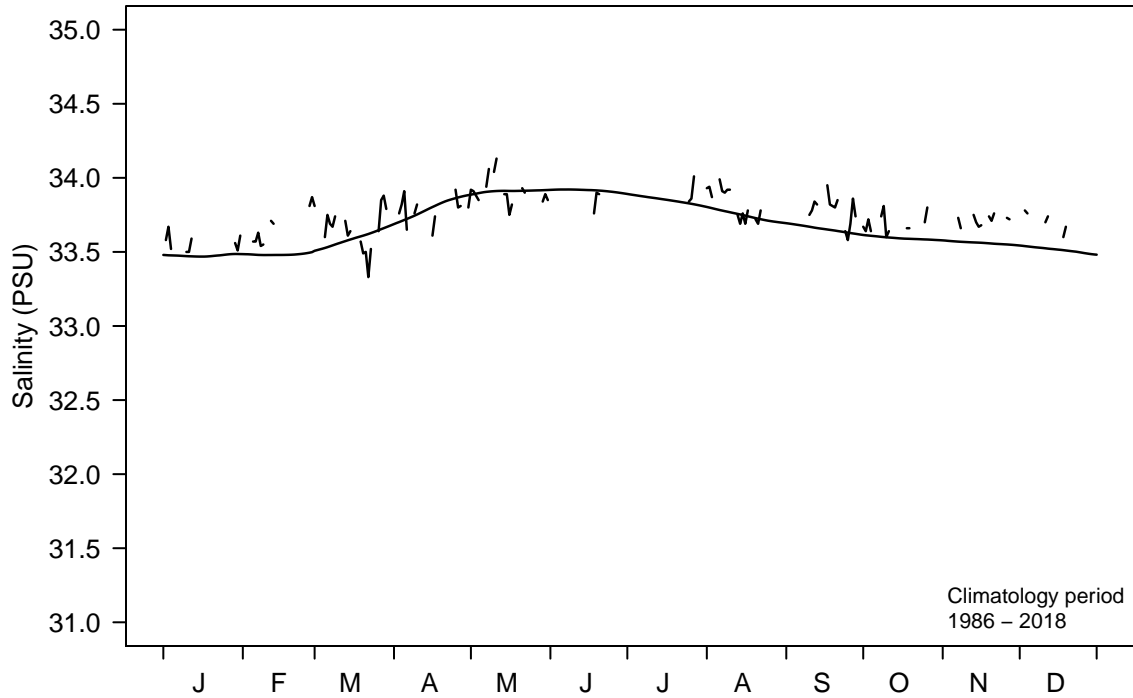
Annual Max  
16.8

Annual Min  
9.3

Days Sampled  
156/365 (42.7%)

Days Flagged  
0/365 (0.0%)

# Granite Canyon, CA 2018



## Climatological 2018

	Mean	Max	Min	Mean	Max	Min
Jan	33.47	34.16	28.20	33.56	33.67	33.50
Feb	33.48	34.11	32.70	33.69	33.87	33.54
Mar	33.58	34.47	32.66	33.66	33.88	33.33
Apr	33.80	35.41	32.21	33.80	33.96	33.61
May	33.90	35.13	33.10	33.91	34.13	33.75
Jun	33.91	34.51	33.16	33.90	34.04	33.76
Jul	33.84	35.03	33.26	33.88	34.01	33.78
Aug	33.75	34.29	33.19	33.82	33.99	33.69
Sep	33.65	34.25	33.17	33.78	33.95	33.58
Oct	33.58	34.42	33.23	33.69	33.81	33.60
Nov	33.56	34.09	31.70	33.71	33.76	33.66
Dec	33.52	33.96	33.05	33.69	33.78	33.60

Annual Mean  
33.70

Annual Max  
34.10

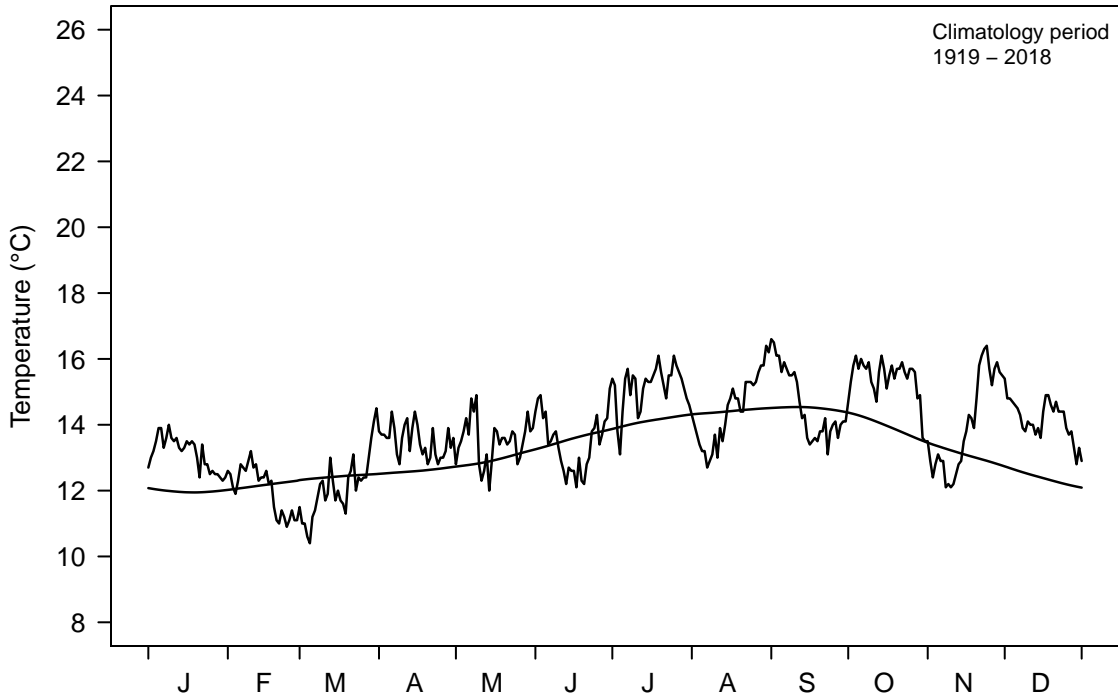
Annual Min  
33.30

Days Sampled  
156/365 (42.7%)

Days Flagged  
1/365 (0.3%)

# Pacific Grove, CA

2018



Climatological

2018

	Mean	Max	Min	Mean	Max	Min
Jan	11.9	15.0	8.3	13.1	14.0	12.3
Feb	12.2	15.0	8.3	12.0	13.2	10.9
Mar	12.4	17.5	9.0	12.1	14.5	10.4
Apr	12.6	16.9	9.0	13.5	14.4	12.8
May	12.9	18.0	9.4	13.5	14.9	12.0
Jun	13.6	19.0	10.0	13.5	15.1	12.1
Jul	14.1	21.0	10.8	15.2	16.1	13.1
Aug	14.4	19.0	10.6	14.4	16.4	12.7
Sep	14.5	18.9	11.1	14.6	16.6	13.1
Oct	14.0	18.5	10.5	15.4	16.1	13.5
Nov	13.1	17.0	9.1	14.0	16.4	12.1
Dec	12.4	16.0	7.0	14.2	15.4	12.8

Annual Mean  
13.8

Annual Max  
16.6

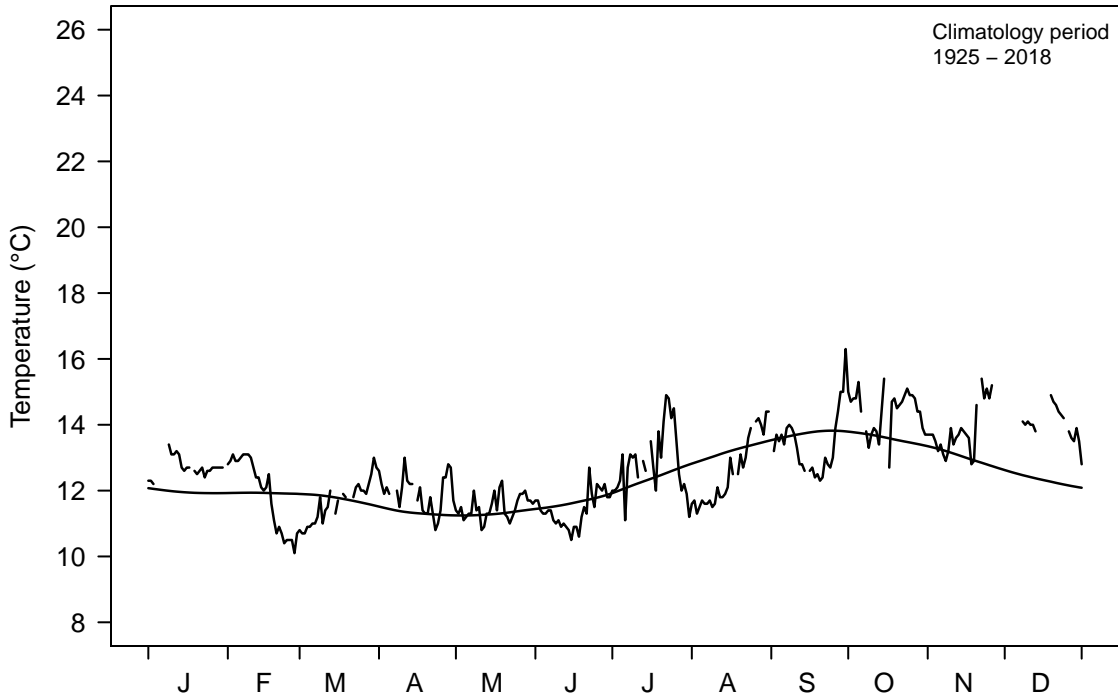
Annual Min  
10.4

Days Sampled  
365/365 (100.0%)

Days Flagged  
0/365 (0.0%)

# Farallon Islands, CA

2018



Climatological

2018

	Mean	Max	Min	Mean	Max	Min
Jan	11.9	15.5	9.4	12.8	13.4	12.2
Feb	11.9	17.1	5.1	11.9	13.1	10.1
Mar	11.8	15.0	7.8	11.6	13.0	10.7
Apr	11.3	17.1	7.6	11.9	13.0	10.8
May	11.3	18.0	8.5	11.5	12.3	10.8
Jun	11.6	18.0	8.9	11.4	12.7	10.5
Jul	12.3	17.2	9.4	12.9	14.9	11.1
Aug	13.2	19.3	9.9	12.6	14.4	11.3
Sep	13.8	18.9	10.1	13.4	16.3	12.3
Oct	13.6	18.0	10.0	14.4	15.4	12.7
Nov	13.0	17.4	8.9	13.8	15.4	12.8
Dec	12.3	16.6	8.9	14.0	14.9	12.8

Annual Mean  
12.6

Annual Max  
16.3

Annual Min  
10.1

Days Sampled  
328/365 (89.9%)

Days Flagged  
0/365 (0.0%)

# Farallon Islands, CA

2018



Climatological

2018

	Mean	Max	Min	Mean	Max	Min
Jan	32.91	34.57	11.00	33.28	33.46	33.09
Feb	32.89	34.49	21.15	33.35	33.71	33.00
Mar	33.01	34.31	23.04	33.52	33.77	33.21
Apr	33.31	34.90	19.78	33.49	33.95	32.93
May	33.62	34.90	28.12	33.91	34.35	33.63
Jun	33.76	34.95	28.98	34.07	34.72	33.91
Jul	33.76	34.88	31.00	33.88	34.18	33.63
Aug	33.68	34.65	31.95	33.75	33.93	33.52
Sep	33.59	34.62	30.97	33.69	33.93	33.57
Oct	33.53	34.80	31.15	33.68	33.81	33.43
Nov	33.43	34.87	19.53	33.66	33.78	32.92
Dec	33.34	34.76	26.33	33.64	33.73	33.53

Annual Mean  
33.70

Annual Max  
34.70

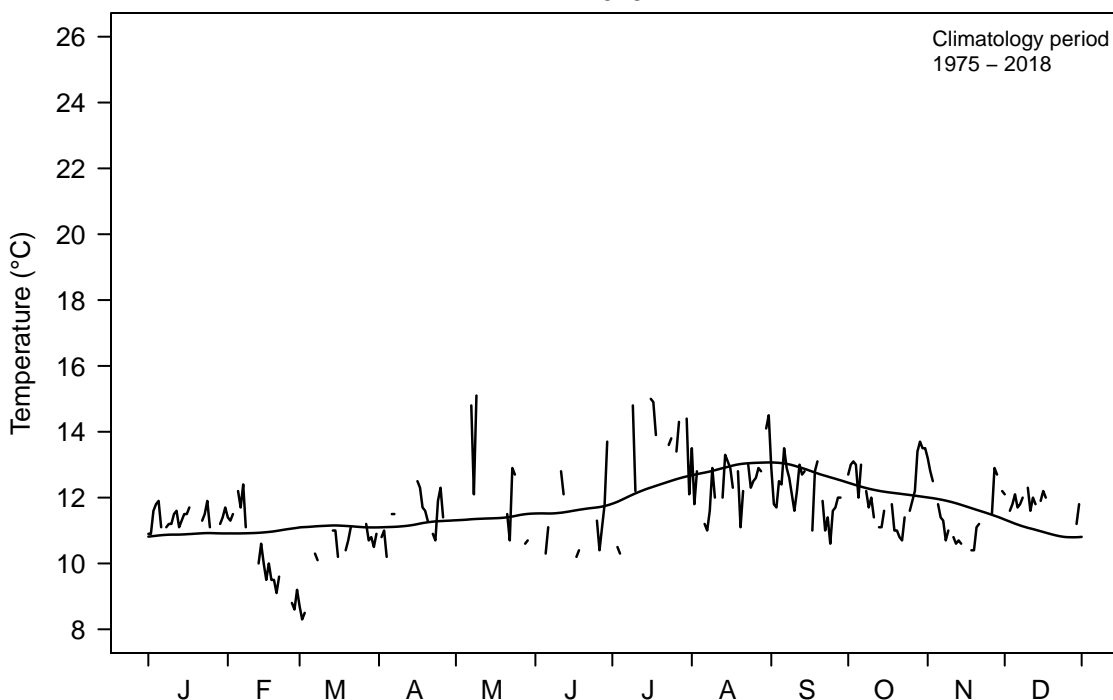
Annual Min  
32.90

Days Sampled  
327/365 (89.6%)

Days Flagged  
15/365 (4.1%)

# Trinidad Beach, CA

2018



Climatological

2018

	Mean	Max	Min	Mean	Max	Min
Jan	10.9	14.5	6.5	11.4	11.9	10.9
Feb	10.9	16.5	5.9	10.3	12.4	8.6
Mar	11.2	17.8	7.9	10.3	11.7	8.3
Apr	11.2	15.3	7.3	11.5	12.8	10.2
May	11.3	16.8	8.0	12.2	15.1	10.6
Jun	11.6	17.1	7.9	11.5	13.7	10.2
Jul	12.3	16.9	8.2	13.2	15.0	10.3
Aug	13.0	18.8	9.2	12.6	14.5	11.0
Sep	12.8	17.7	9.6	12.2	13.5	10.6
Oct	12.2	15.9	9.2	12.1	13.7	10.7
Nov	11.8	15.8	8.2	11.5	13.2	10.4
Dec	11.2	14.7	7.6	11.9	12.7	11.2

Annual Mean  
11.7

Annual Max  
15.1

Annual Min  
8.3

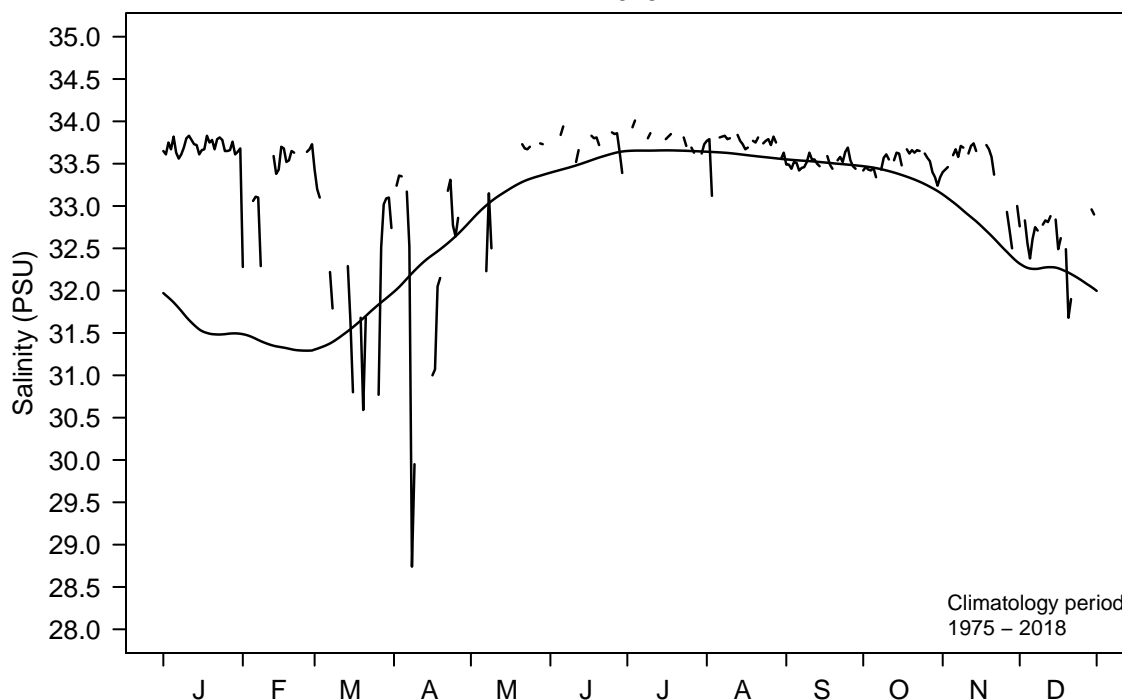
Days Sampled  
236/365 (64.7%)

Days Flagged  
0/365 (0.0%)



# Trinidad Beach, CA

2018



Climatological

2018

	Mean	Max	Min	Mean	Max	Min
Jan	31.59	33.83	23.48	33.70	33.83	33.56
Feb	31.35	33.88	23.37	33.33	33.73	32.28
Mar	31.55	34.18	21.00	32.23	33.43	30.59
Apr	32.40	34.50	22.94	31.97	33.36	28.33
May	33.19	34.28	24.25	33.34	33.74	32.23
Jun	33.55	34.60	30.28	33.74	33.94	33.39
Jul	33.66	34.28	31.80	33.79	34.01	33.62
Aug	33.60	34.19	32.40	33.73	33.84	33.12
Sep	33.53	34.25	32.00	33.52	33.69	33.42
Oct	33.37	34.11	29.36	33.51	33.67	33.24
Nov	32.81	34.02	25.78	33.43	33.74	32.50
Dec	32.11	33.80	24.20	32.61	32.96	31.68

Annual Mean  
33.30

Annual Max  
34.00

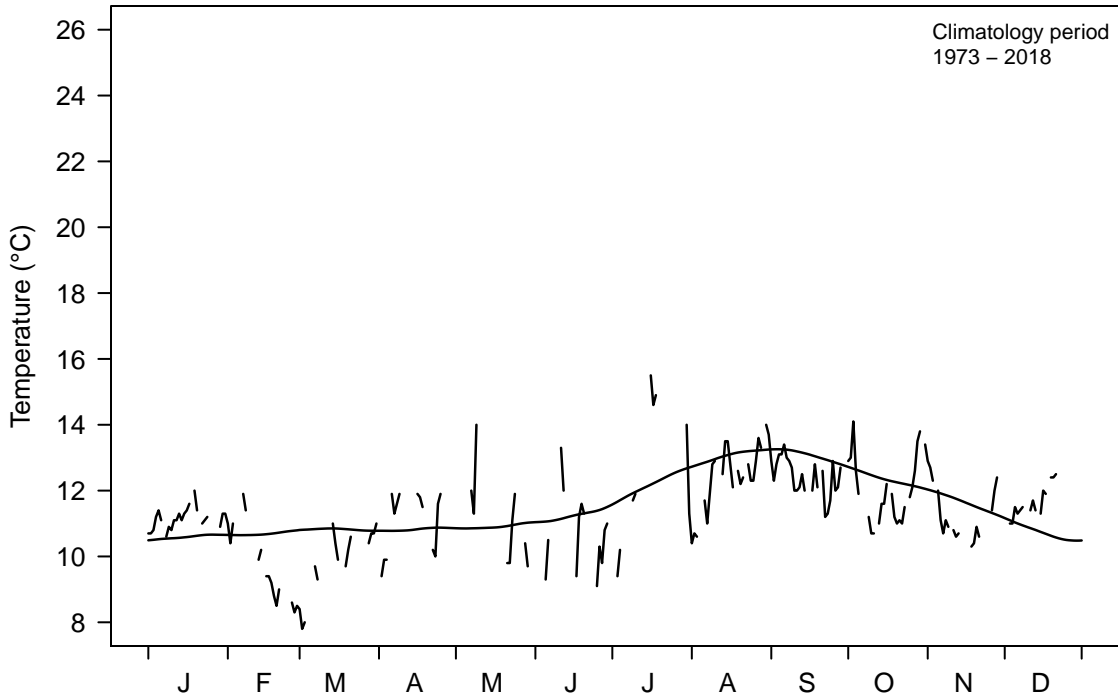
Annual Min  
28.30

Days Sampled  
248/365 (67.9%)

Days Flagged  
2/365 (0.5%)

# Trinidad Bay, CA

2018



Climatological

2018

	Mean	Max	Min	Mean	Max	Min
Jan	10.6	14.0	6.3	11.1	12.0	10.6
Feb	10.6	14.2	5.4	9.8	11.9	8.3
Mar	10.9	15.7	7.5	10.0	11.5	7.8
Apr	10.8	15.5	7.3	11.1	12.0	9.4
May	10.8	17.0	7.2	11.2	14.0	9.7
Jun	11.2	17.0	7.5	10.7	13.3	9.1
Jul	12.2	16.9	8.3	12.9	15.5	9.4
Aug	13.1	18.2	9.0	12.4	14.0	10.4
Sep	13.0	18.0	8.9	12.4	13.4	11.2
Oct	12.3	16.3	9.3	12.0	14.1	10.7
Nov	11.7	15.5	8.0	11.3	12.9	10.3
Dec	10.9	15.5	7.3	11.6	12.5	11.0

Annual Mean  
11.4

Annual Max  
15.5

Annual Min  
7.8

Days Sampled  
227/365 (62.2%)

Days Flagged  
0/365 (0.0%)

## Appendix A - Station Thermometer Metadata for 2018

Station	Therm. Serial Number	Start Date	End Date	Date Calibrated	Post Calibration Date	5°C Offset	15°C Offset	25°C Offset
La Jolla	DT029	7/26/17	11/26/18	7/6/17	11/27/18	-0.03	0.00	-0.05
	DT001	11/29/18	2/21/19	7/27/18	3/28/19	-0.03	0.01	-0.03
San Clemente	DT012	8/1/17	11/2/18	7/6/17	3/28/19	-0.02	0.01	-0.03
	DT019	11/3/18	3/4/19	9/7/18	5/22/19	-0.04	0.00	-0.04
Newport Beach	DT007	7/15/16	11/30/18	6/28/16	2/13/19	-0.02	0.03	-0.05
	DT034	3/12/18	5/31/18	9/8/16	2/13/19	-0.03	0.01	-0.03
	DT031	12/1/18	4/22/19	9/7/18	TBD	TBD	TBD	TBD
Zuma Beach	DT030	5/21/17	1/22/18	9/8/16	7/27/18	-0.02	0.01	-0.04
	DT032	1/23/18	4/24/19	9/8/16	5/22/19	-0.03	-0.01	-0.04
Santa Barbara	DT018	9/14/16	11/30/18	9/8/16	2/13/19	0.00	0.01	-0.03
	DT006	12/1/18	4/25/19	7/27/18	TBD	TBD	TBD	TBD
Granite Canyon	DT033	5/22/17	5/4/18	9/8/16	7/27/18	-0.02	0.01	-0.02
	DT026	5/5/18	12/11/18	10/19/17	2/13/19	-0.03	-0.01	-0.06
	DT039	12/12/18	TBD	11/27/18	TBD	TBD	TBD	TBD
Pacific Grove	DT039	9/15/17	3/8/18	7/5/17	9/7/18	-0.02	0.01	-0.02
	DT004	3/9/18	11/29/18	10/19/17	2/13/19	0.00	0.02	-0.05
	DT030	11/30/18	6/30/19	9/7/18	TBD	TBD	TBD	TBD
Farallon Islands	DT015	5/31/17	5/14/18	9/8/16	TBD	TBD	TBD	TBD
	DT037	5/15/18	2/21/19	7/5/17	3/28/19	-0.03	0.01	-0.03
Trinidad Beach and Bay	DT011	5/24/17	12/31/18	7/5/17	2/13/19	-0.02	0.02	-0.04

TBD = To Be Determined (Post calibration not done as of publishing)